

Model 909 Hot/Wet Single Gas Mass Flow CEM

Benefits

- High reliability and reduced maintenance requirements through a no-moving-parts design
- Hot/wet analysis prevents errors associated with:
 - Correcting for water vapor
 - Absorption losses in driers
- Accuracy better than 2.5 ppm SO₂
- Able to measure SO₂, NO, NO₂, H₂S, NH₃, or a number of other chemicals
- No H₂O or CO₂ interference
- Automated zero and span gas calibration
- Provides serial interface with plant DCS
- Incorporates flow measurement for emission rate calculations

The Need

The AMETEK Western Research® Model 909 is a single gas version of our Model 910 Continuous Emissions Monitor. The analyzer is specifically configured for monitoring stack emissions on a mass rate basis. It measures stack effluent temperature and velocity in addition to pollutant concentrations at stack conditions enabling mass emission rates to be reported. With the addition of an optional zirconium oxide sensor, the Model 909 is capable of monitoring oxygen.

The Model 909 features a no-moving-parts design for maximum reliability and durability. It is a complete system with a sample extraction and transport system designed to ensure sample integrity. Housing options for the analyzer include a cabinet or walk-in shelter built to your specifications.

The Model 909 performs all necessary sample gas and calibration

gas flow management, and probe and sample line temperature control. The Model 909 is a full function continuous emissions monitoring system (CEM) which requires the addition of only a sample probe and sample line to be fully operational.

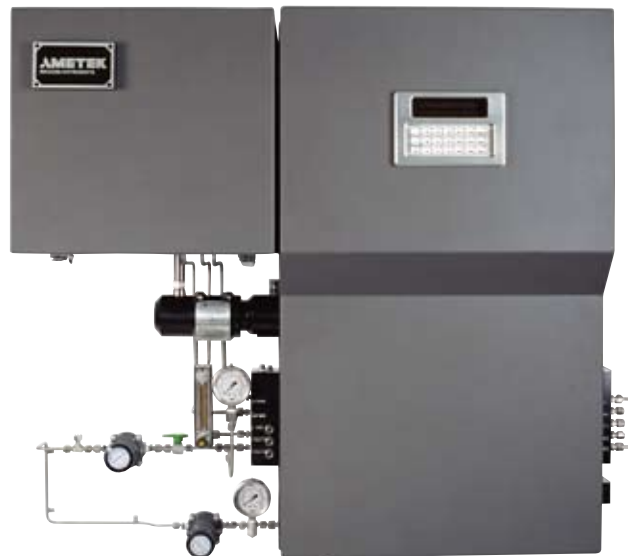
The Measurement

The Model 909 uses our proprietary high resolution UV technology in a dual beam, dual wavelength configuration. Resolution better than 0.02 nm is provided by high-intensity line source lamps. These sources emit at fixed wavelengths providing great measurement stability and emit low total power removing the potential for sample photolysis. The high resolution enables unparalleled linearity over a wide dynamic range, which in turn, leads to simple, robust data analysis. The dual beam configuration, combined with the reference measurement, ensures low noise performance with minimal baseline and span drift.

UV measurements do not suffer from H₂O and CO₂ interference as these species are transparent in the UV. This greatly simplifies sample handling. The Model 909 is a fully extractive, heated wet basis analyzer. The sample cell and all components in contact with the sample are heated above the dew points of all gases in the sample stream. This results in a simpler and more accurate calculation of gas concentrations requiring no corrections for condensed and dissolved components. It also results in a simpler, more reliable analytical system as there is no need for sample drying. The Model 909 has built-in zero and span calibration and four zone temperature control.

Applications

- CEM applications in:
 - Sulfur plants
 - Smelters
 - Coal, oil and gas-fired power plants
 - Industrial boilers and process heaters



Model 909 Hot/wet Single Gas Mass Flow CEM

Model 909 Hot/Wet Single Gas Mass Flow CEM

Performance Specifications

Methodology: Dual beam, high resolution, nondispersive UV

Species Measurable	Minimum Full Scale†	Maximum Full Scale
SO ₂	250 ppm	100%
NO	300 ppm	100%
NO ₂	300 ppm	100%
H ₂ S	500 ppm	100%
NH ₃	125 ppm	100%
Cl ₂	500 ppm	100%

† Minimum full scale is based on $\pm 1\%$ full scale accuracy over 24 hours with auto zero disabled.

Optional O₂: Integral zirconium oxide

Accuracy: Better than $\pm 1\%$ full scale of standard ranges

Repeatability: Better than $\pm 0.5\%$ full scale of standard ranges

Linearity: Better than $\pm 1\%$ of reading

Response Time: Typically less than 30 s to T90 (excludes sample system)

Sample Transport: Air aspiration

Typical Sample Flow: 3 to 5 L/min (0.1 to 0.2 CFM)

Temperature Control: Independent control of three zones (oven, sample line, probe)

Pressure and Temperature Compensation: Standard

Ambient Temperature*: 5° to 50°C (41° to 122°F)

Instrument Air: Minimum 413.6 KPa (60 psig), 120 L/min (4.24 CFM), instrument quality air

Power: 120 VAC $\pm 10\%$, 47 to 63 Hz or 240 VAC $\pm 10\%$, 47 to 63 Hz, 600 W for analyzer only

Communications:

Analog: 4 x 4 to 20 mA self powered

Digital: One RS232 port for service diagnostics

One RS422 with Modbus protocol

Relays: 3 independent sets of SPDT relays alarm conditions

Physical Dimensions HxWxD:

1553.6 x 1117.6 x 306 mm (61.17 x 44 x 12 in.)

Weight: Estimated minimum 160 kg (350 lbs.)

Approvals and Certifications:

NEC/CEC Class I, Division 2, Groups C & D

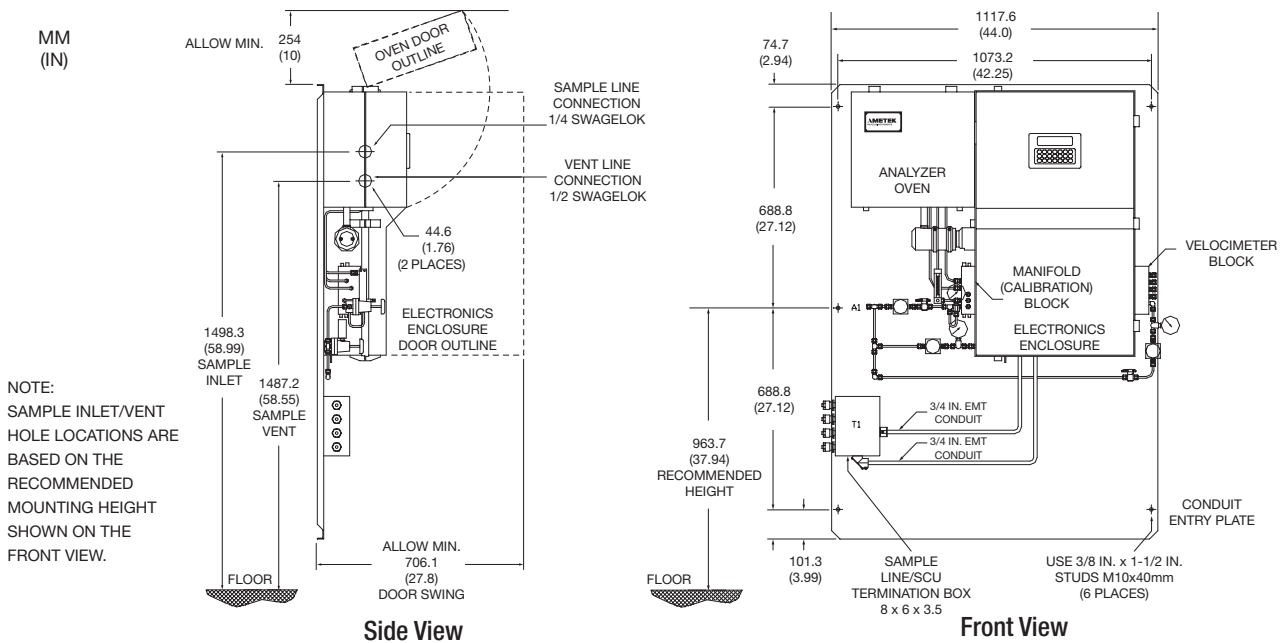
ATEX II 2G EEx pd IIB T3

Russian Ex Proof Certification; 1ExpydIIBT3

Russian Gosstandart Pattern Approval

Complies with all relevant European Directives

* Temperature drift is approximately 1 ppm/°C for the species listed. To achieve maximum accuracy and stability, the analyzer should be installed in a temperature-controlled environment or be zeroed more frequently.



PROCESS INSTRUMENTS
WESTERN RESEARCH

2876 Sunridge Way N.E., Calgary, AB T1Y 7H9
Ph. 403-235-8400, Fax 403-248-3550

www.ametekpi.com



© 2006, by AMETEK, Inc.
All rights reserved. Printed in the U.S.A.
909 (3/23/07)

One of a family of innovative process analyzer solutions from AMETEK Process Instruments.
Specifications subject to change without notice.

SALES AND MANUFACTURING:

USA - Delaware
455 Corporate Blvd., Newark DE 19702 • Tel: 302-456-4400, Fax: 302-456-4444

USA - Oklahoma
2001 N. Indianwood Ave., Broken Arrow OK 74012 • Tel: 918-250-7200, Fax: 918-459-0165

USA - Pennsylvania
150 Freepoint Road, Pittsburgh PA 15238 • Tel: 412-828-9040, Fax: 412-826-0399

WORLDWIDE SALES AND SERVICE LOCATIONS:

USA - Texas
Tel: 281 463 2820, Fax: 281 463 2701

CHINA
Beijing / Tel: 86 10 8526 2111, Fax: 86 10 8526 2141
Chengdu / Tel: 86 28 8675 8111, Fax: 86 28 8675 8141
Shanghai / Tel: 86 21 6426 8111, Fax: 86 21 6426 7818

FRANCE
Tel: 33 1 30 68 89 20, Fax: 33 1 30 68 89 29

GERMANY
Tel: 49 21 59 91 36 0, Fax: 49 21 59 91 3639

MIDDLE EAST - Dubai
Tel: 971 4 881 2052, Fax: 971 4 881 2053

SINGAPORE
Tel: 65 6484 2388, Fax: 65 6481 6588

WESTERN RESEARCH