

Model 933 H₂S Analyzer

Benefits

- Extended, unattended operation for up to six months or longer
- Self-recovery after high concentration H₂S events
- Fast response time to increasing or decreasing H₂S concentrations
- Concentration measurements of COS and methyl mercaptan optionally available
- No consumables, reagents, or disposables other than zero gas

The Need

A critical measurement of natural gas quality is the concentration of hydrogen sulfide (H₂S). Remarkably, the common technique for making this measurement, lead acetate tape, is at least 70 years old. Users of this archaic technology report general dissatisfaction with it due to: high maintenance, the cost and shelf life of tape cassettes, the need for reagents, difficulty handling H₂S overload conditions, the sensitivity of the technology to ambient extremes, and, not least, used cassette disposal.

AMETEK Western Research® has responded to the need for a low maintenance, reliable, and rugged H₂S analyzer by developing the Model 933. The Model 933 uses AMETEK Western Research's proprietary frontal elution chromatography sampling technique, combined with our exceptionally high resolution, multi-wavelength UV optical bench. The result is a unique low level H₂S analyzer that is designed to operate unattended for six months or more.

The Measurement

AMETEK Western Research's unique sample conditioning system uses

frontal elution chromatography to separate and eliminate interfering species. This ensures an accurate analysis of the gas via direct-UV absorption spectroscopy. In sales gas applications, H₂S and COS are the first absorbing species to elute through the chromatography column. These compounds are analyzed photometrically. The next species to elute is methyl mercaptan, which is also measured, and finally, the interfering ethyl mercaptan. Interference by ethyl mercaptan is prevented by terminating the sample analysis before it elutes, and then switching to a fresh column so that the analysis may continue. Two columns are employed in the 933. While one column is conditioning the gas sample, the other is automatically regenerated.

In normal operation, the 933 uses its analysis of the COS and methyl mercaptan concentrations to provide real time compensation for the H₂S measurement. Optionally, the 933 can be configured to output concentration values for these compounds.

The Model 933 utilizes two onboard microprocessors that provide concentration calculations, data processing, calibration, sophisticated self-diagnostics, and column switching control.

Applications

- Gas sweetening
- Pipeline quality/custody transfer
- Synthetic natural gas (SNG)
- Blending stations



For water dew point or concentration, please refer to AMETEK's 3050-OLV Quartz Crystal Moisture Analyzer. For hydrocarbon dew point measurement, please refer to our Western Research® Model 241CE II Analyzer.

Model 933 H₂S Analyzer

Performance Specifications

Methodology: Proprietary frontal elution sampling; nondispersive ultraviolet analysis for hydrogen sulfide (H₂S), carbonyl sulfide (COS) and methyl mercaptan (MeSH)

Full Scale Ranges: ppm ranges are standard; mg/Nm³ and other ranges are available

Standard Range:

H₂S: 0 to 25 ppm min. to 0 to 100 ppm max.
COS option: 0 to 100 ppm min. to 0 to 500 ppm max.
MeSH option: 0 to 50 ppm min. to 0 to 250 ppm max.
Higher ranges are available upon request

Low Range:

H₂S: 0 to 5 ppm min. to 0 to 50 ppm max.
COS option: 0 to 25 ppm min. to 0 to 250 ppm max.
MeSH option: 0 to 15 ppm min. to 0 to 100 ppm max.

Accuracy:

Standard range: ±2% of full scale
Low range: ±5% of full scale

Repeatability:

Standard range: ±2% of full scale

Zero Drift:

Standard range: less than ±2% of full scale in 24 hours
Low range: less than ±5% of full scale in 24 hours

Response Time, Excluding Sampling System

H₂S: less than 30 seconds to 90% response
COS: less than 60 seconds to 90% response
MeSH: less than 180 seconds to 90% response

Sensitivity: 0.5% of full scale

Cross-interference: H₂S concentration measurement—less than 2% of the sum of COS and MeSH

Sample Stream Requirements: greater than 80% methane, less than 10% ethane, less than 3% propane, less than 1.25% total butanes, less than 0.5% C₅+. Maximum water content is 0.6%.¹

Zero Gas: Instrument zero purity carbon dioxide; UHP nitrogen, or UHP methane. Minimum auto-zero interval is once per 24 hours.

Sample Pressure Requirement: 830 kPag to 13790 kPag (120 psig to 2000 psig)

Typical Flow: 2.5 L/min. (5 SCFH)

Outputs: Up to 4 isolated 4-to-20 mA, loop or self-powered; 4 non-isolated 1 to 5 VDC; 5 independent sets of SPDT, Form C, potential free alarm relay contacts, 2 A at 240 VAC

Digital Communication: RS485 Modbus port; RS232/RS485 service port

Power Consumption: <500 W (excluding sample and vent line)

Power:

104 to 132 VAC, 47 to 63 Hz, <3A
207 to 264 VAC, 47 to 63 Hz, <2A

Ambient Temperature: 0°C to 50°C (32°F to 122°F)

Dimensions: HxWxD 1185 x 780 x 254 mm (46.65 x 30.7 x 9.97 in.)

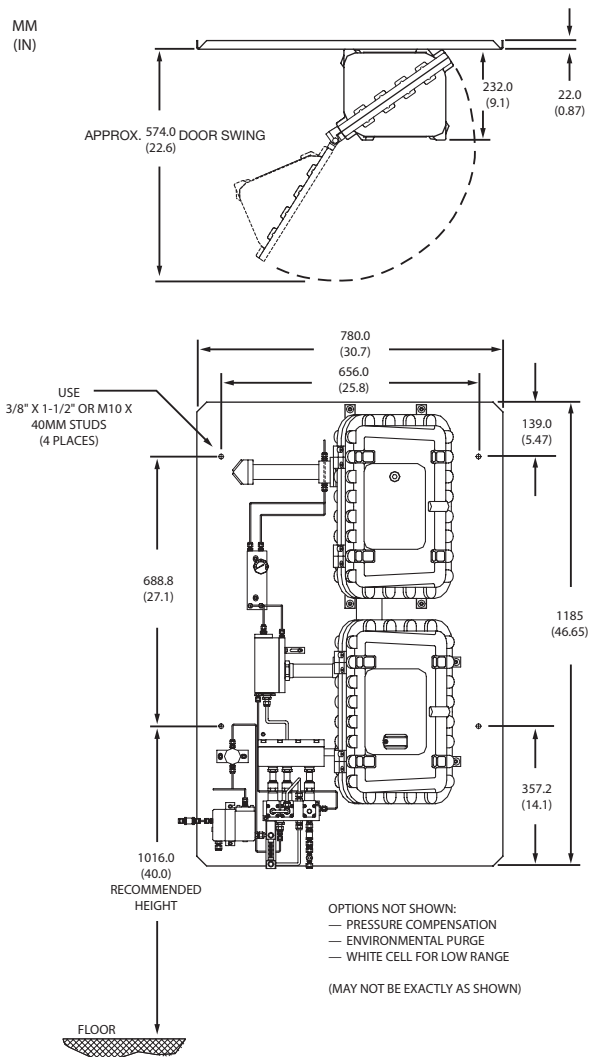
Weight: Approximately 145 kg (320 lbs)

Approvals and Certifications:

CEC Class I, Division 1, Groups C & D; Ex d IIB T3
NEC Class I, Division 1, Groups C & D; AEx d IIB T3
ATEX II 2G EEx d IIB T3
EMC
Russian Ex Proof Certification; 1ExdIIBT3 X
Russian Gosstandart Pattern Approval
Complies with all relevant European directives

Options: Gas/liquid (glycol) separating filter, other measuring ranges, COS and methyl mercaptan measurement, pressure compensation, and up to 4 V/I outputs

1. 0.6% maximum water content is based on a 35°C maximum water dew point temperature at 830 kPag (120 psig).



PROCESS INSTRUMENTS
WESTERN RESEARCH

2876 Sunridge Way N.E., Calgary, AB T1Y 7H9
Ph. 403-235-8400, Fax 403-248-3550

www.ametekpi.com



© 2006, by AMETEK, Inc.
All rights reserved. Printed in the U.S.A.
933 (03/23/07)

One of a family of innovative process analyzer solutions from AMETEK Process Instruments.
Specifications subject to change without notice.

SALES AND MANUFACTURING:

USA - Delaware
455 Corporate Blvd., Newark DE 19702 • Tel: 302-456-4400, Fax: 302-456-4444

USA - Oklahoma
2001 N. Indianwood Ave., Broken Arrow OK 74012 • Tel: 918-250-7200, Fax: 918-459-0165

USA - Pennsylvania
150 Freepoint Road, Pittsburgh PA 15238 • Tel: 412-828-9040, Fax: 412-826-0399

WORLDWIDE SALES AND SERVICE LOCATIONS:

USA - Texas
Tel: 281 463 2820, Fax: 281 463 2701

CHINA
Beijing / Tel: 86 10 8526 2111, Fax: 86 10 8526 2141
Chengdu / Tel: 86 28 8675 8111, Fax: 86 28 8675 8141
Shanghai / Tel: 86 21 6426 8111, Fax: 86 21 6426 7818

FRANCE
Tel: 33 1 30 68 89 20, Fax: 33 1 30 68 89 29

GERMANY
Tel: 49 21 59 91 36 0, Fax: 49 21 59 91 3639

MIDDLE EAST - Dubai
Tel: 971 4 881 2052, Fax: 971 4 881 2053

SINGAPORE
Tel: 65 6484 2388, Fax: 65 6481 6588