

Advanced Sulfur Reduction (ASR) Sampling Probe

Superior Benefits

- Prevents sulfur plugging
- Reduces installation costs
- Reduces maintenance

Application

- Sulfur Recovery Units

The Need

Continuous, on-line analysis of tail gas is a requirement for efficient operation of an SRU. There are conditions, however, which prevent efficient operation from occurring. If the analyzer is not operating because the sample system is plugged, there is a loss of control and a loss of efficiency.

The problem is sulfur. It freezes, it condenses and it interferes with the analysis of the tail gas. The need is to reliably heat all parts of the sample system to prevent freezing and condensation. The problem is the steam used to heat traditional sample systems; it's unreliable and difficult to control. The need is to remove the majority of the sulfur from the sample stream before it becomes a problem in the rest of the sample system.

The need is to solve sampling problems.

The Solution

AMETEK's ASR 900 Sampling Probe.

This unique design removes the sulfur at sample point. The probe incorporates a condenser, coalescer, aspirator and sample line connections all in a temperature-controlled body.

The ASR 900 probe is controlled at precisely the correct temperature to reduce sulfur and prevent plugging by an integrated electrical heater approved for hazardous areas.

The ASR 900 probe reduces installation costs. Sulfur reduction at the sample point allows freedom in locating the analyzer system below the sample point. Only one process connection is required.

The integrated shut-off valves allow servicing without removing the probe from the process. Safety during maintenance is ensured because the probe body and the sulfur knockout can be dismantled without exposure to process gas.

AMETEK Process Instrument's ASR 900 is fully compatible with the Series

700 Air Demand Analyzer and AMETEK's new 900 Air Demand Analyzer. Whatever the requirement at the sample point, AMETEK Process Instruments can supply a trouble-free engineered solution.



Advanced Sulfur Reduction (ASR) Sampling Probe

Advanced Sulfur Reduction (ASR) Sampling Probe

Performance Specifications

Ambient Temperature: -50 °C to 70 °C (-58 °F to 158 °F)

Utility Requirements

120/240V, 50/60 Hz, 150W

Less than 1.0 SCFM instrument air (from analyzer)

Process Connection: 1 1/2 in. M-NPT. Various ANSI flange adaptors available (ex: 1 1/2" to 3" at 150 lb or 300 lb.)

Ingress Protection

NEMA Type 4

Meets IP55

Dimensions: 127 mm D x 267 mm H (5 in. D x 10.5 in. H) (requires 51 mm [2 in.] on either side for installation purposes)

Weight: 11.5 kg (25 lbs.)

Approvals and Certifications

CSA General Safety Requirements

CSA Class I, Division 1, Groups B, C and D

Ex d IIB + H₂ T3 (Class I, Zone 1, Group IIB + H₂)

ATEX Directive; II 2G EEx d IIB + H₂ T3

Complies with all relevant European Directives

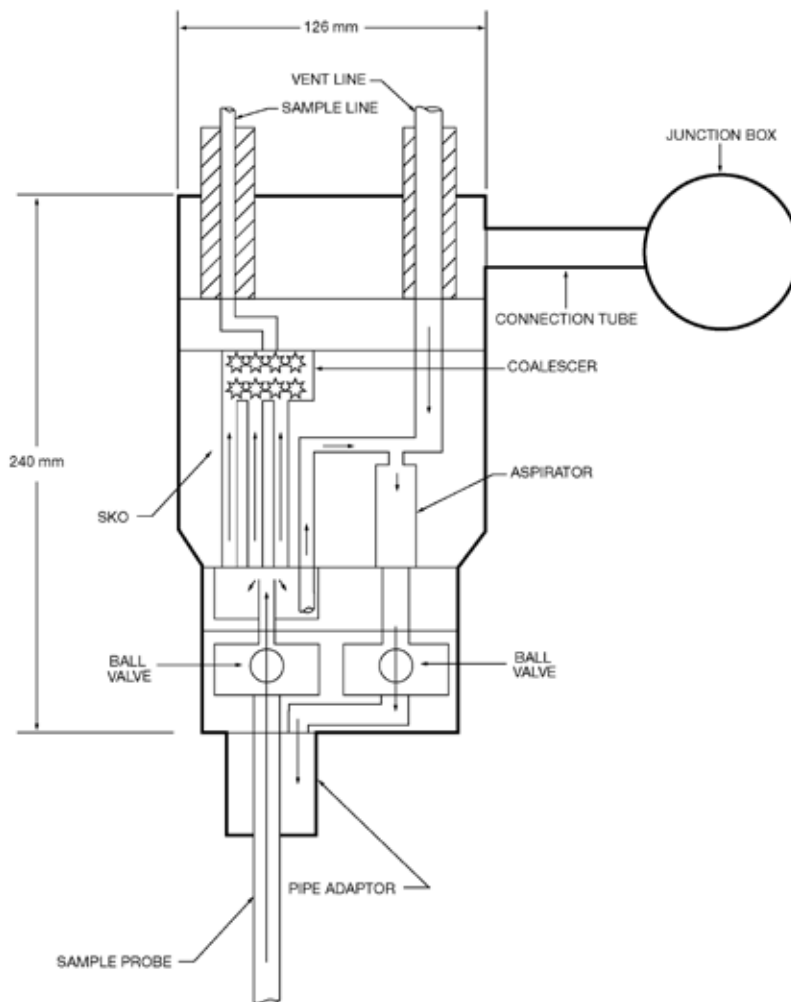
Russian Gostandart Ex Proof Certification; 1ExdIIBT3

Pressure Equipment Directive

Canadian Registration Number OH5289.2 1.2.

1. High temp version

2. ASME Boiler and Pressure Vessel Code 1998, Section VIII Division 1



AMETEK[®]
PROCESS INSTRUMENTS

2876 Sunridge Way N.E., Calgary, AB T1Y 7H9
Ph. 403-235-8400, Fax 403-248-3550

www.ametekpi.com



© 2006, by AMETEK, Inc.
All rights reserved. Printed in the U.S.A.
ASR (05/10/07)

One of a family of innovative process analyzer solutions from AMETEK Process Instruments.
Specifications subject to change without notice.

SALES AND MANUFACTURING:

USA - Delaware

455 Corporate Blvd., Newark DE 19702 • Tel: 302-456-4400, Fax: 302-456-4444

USA - Oklahoma

2001 N. Indianwood Ave., Broken Arrow OK 74012 • Tel: 918-250-7200, Fax: 918-459-0165

USA - Pennsylvania

150 Freeport Road, Pittsburgh PA 15238 • Tel: 412-828-9040, Fax: 412-826-0399

WORLDWIDE SALES AND SERVICE LOCATIONS:

USA - Texas

Tel: 281 463 2820, Fax: 281 463 2701

CHINA

Beijing / Tel: 86 10 8526 2111, Fax: 86 10 8526 2141
Chengdu / Tel: 86 28 8675 8111, Fax: 86 28 8675 8141
Shanghai / Tel: 86 21 6426 8111, Fax: 86 21 6426 7818

FRANCE

Tel: 33 1 30 68 89 20, Fax: 33 1 30 68 89 29

GERMANY

Tel: 49 21 59 91 36 0, Fax: 49 21 59 91 3639

MIDDLE EAST - Dubai

Tel: 971 4 881 2052, Fax: 971 4 881 2053

SINGAPORE

Tel: 65 6484 2388, Fax: 65 6481 6588

WESTERN RESEARCH[®]